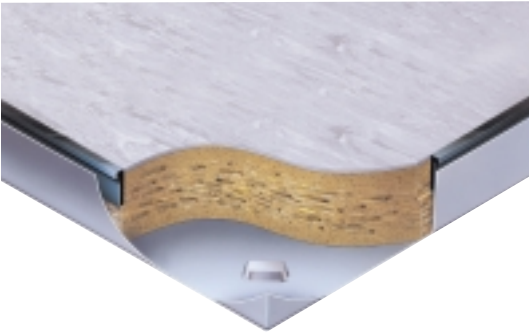


Identification Icon



Panel Illustration



Feature Benefits

- Captive edge trims
- Comprehensive range of finishes
- Good edge strength
- Static and anti-static properties
- Solid underfoot
- Good acoustic performance
- A range of alternative trims are available on special order

Description

Sapphire Medium Grade gravity lay panel meets the rigorous edge protection demands of hard laminate finishes. ABS edge trims protect the laminate edge from chipping during lifting ensuring durability. The trims provide attractive framing of the laminate adding to the overall appearance.

Category	Laminated
Core Material	High Density Particle Board
Panel Construction	Galvanised Top Sheet and Bottom Tray Incorporating Captive Edge Trim

Core and Tray Thickness

Core	30mm
Steel - Top Tray/Sheet	0.5mm
Steel - Bottom Tray/Sheet	0.5mm

Construction

Standard Sapphire Medium Grade panels are 600mm square and 31mm thick. The galvanised steel shell construction comprises a plain top and bottom tray laminated around a high performance chipboard core. The steel bottom tray wraps around the ABS trim trapping the trim in position preventing detachment during use.

Die-formed slots in the panel bottom sheet provide positive location and retention of the system. The panels are finished and laminated using a wide range of structural adhesives suitable for conductive and non-conductive applications.

Product Performance

	PSA	Design
Concentrated Load (Point Load)	3kN over 25mm sq	4.0kN over 25mm sq
Uniformly Distributed Load (UDL)	8kN/m ²	25kN/m ²
Air Leakage @25Pa(with-seal)	0.75Ltrs/sec/m ²	
Fire Rating	Class O	
Electrical Continuity	Complies with the IEE Regulations (16th Edition)	

Note: Design loads based on instantaneous testing with a safety factor of 2.

Panel Dimensions and Weight (Nominal)

Size	600 x 600mm
Thickness	31mm
Panel Weight	15kg
Weight of System	45kg/m ² (varies with height)

Application	
Light Office	✓
General Office	✓
Computer Room	-
Computer Room Heavy	-
Computer Room Extra Heavy	-

Typical Application - High Quality Interior Finishes



Factory Bonded Finishes

	Available
Bare Faced	-
Fibre Bond Carpet	-
High Pressure Laminate	✓
Hardwood	-
Vinyl	✓
Rubber	✓
Modular Carpet	-
Air Seal	-
Simploc	-

	Overall Floor Height				
Pedestal	29-42mm	39-62mm	49-80mm	80-610mm	610mm>
Type	Alpha	Alpha	Alpha	Alpha II	Alpha III*
Cap Field	DSF (Blue)	DSF (Blue)	DSF (Blue)	DSF (Blue)	DSF (Blue)
Cap Perimeter	Standard (Black)	Standard (Black)	Standard (Black)	Standard (Black)	Standard (Black)

Customer requirements other than listed may be subject to bonding trials prior to acceptance of order.

*NS300 pedestal option available

Special Applications

Universal Stringer	- Snap on	Provides lateral stability in extreme dynamic load environment
	- Bolt on	Provides lateral stability and load bearing properties where minimal edge deflection is required for rolling load applications
Bridging Sections		Where obstructions prevent the use of pedestals
Bracing Bars		Enhance lateral performance and rigidity to meet heavy rolling loads or seismic requirements
Ramp Pedestals		Pivot head pedestal to support angled ramp panels
Fixing Screws		To affix pedestal to floor in addition to adhesive for greater rigidity at extreme floor heights
Pedestal Earth Clamp		Provides an electrical connection to the floor system for earth bonding
Foil Tape		Aluminium tape to seal edge of cut panel
Perimeter Gasket		20 x 9mm edge foam tape applied to the panel edge between floor and wall if required



Kingspan Access Floors Limited

Head Office: Burma Drive, Marfleet, Hull HU9 5SG
Tel: +44 (0) 1482 781701 Fax: +44 (0) 1482 799272

Internet: www.kingspanaccessfloors.co.uk Email: marketing@kingspanaccessfloors.co.uk